

BARRIER

RB2000 BARRIER

PRODUCT CODE	RB2000
DIMMENSIONS (MM)	L2000 H1000 D400 / WL1650
MAX ANGLE (DEG)	25 DEG
MATERIAL	UV MDPE
FILL CAPACITY (L)	365L
WEIGHT E / F (KG)	35 /400KG
COLOURS	RED / WHITE
FILL / DRAIN HOLES (MM)	95 / 25MM
FORK CHANNELS	2 X 200 X 50MM
NO PER PALLET	6 OVER SIZED
CONFIRMED WIND SPEED	72 MPH (MIRA not tot failure)

ACCESSORIES

RB2000 FRONT STOP

PRODUCT CODE	RB2000FS
DIMMENSIONS (MM)	L550 H1000 D 400
MAX ANGLE (DEG)	-
MATERIAL	UV MDPE
FILL CAPACITY (L)	-
WEIGHT E / F (KG)	5KG
COLOURS	RED / WHITE
FILL / DRAIN HOLES (MM)	-
FORK CHANNELS	-
NO PER PALLET	24
CONFIRMED WIND SPEED	-

RB2000 REAR STOP

PRODUCT CODE	RB2000 ES
DIMMENSIONS (MM)	L550 H1000 D 400
MAX ANGLE (DEG)	-
MATERIAL	UV MDPE
FILL CAPACITY (L)	-
WEIGHT E / F (KG)	5KG
COLOURS	RED / WHITE
FILL / DRAIN HOLES (MM)	-
FORK CHANNELS	-
NO PER PALLET	24
CONFIRMED WIND SPEED	-

NOTE:

System dimensions are approximated and taken up to the main panel height



ACCESSORIES

RB2000 MESH

PRODUCT CODE	RBFP
DIMENSIONS (MM)	L1500 H1120 D40
MATERIAL	STEEL POWDER COAT
PANEL WEIGHT	12
COUPLING	NOT SHOWN
COLOURS	WHITE
NO PER PALLET	25 OVER SIZED
MIRA WIND SPEED	70MPH

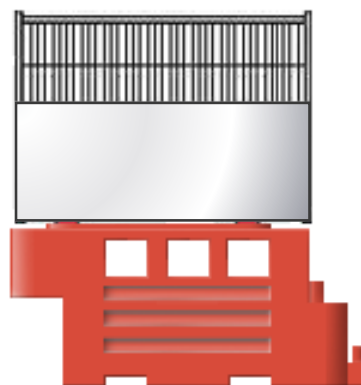
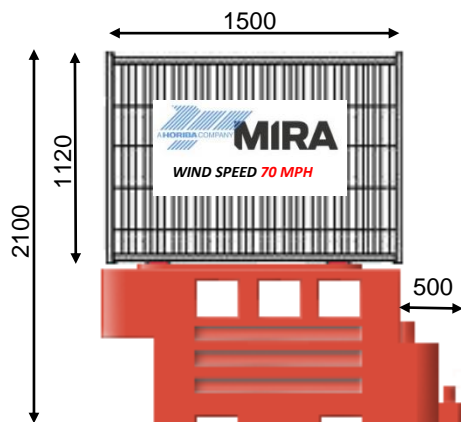
RB2000 50 / 50

PRODUCT CODE	RB2000HHHM
DIMENSIONS (MM)	L1500 H1120 D40
MATERIAL	STEEL POWDER COAT
PANEL WEIGHT	15
COUPLING	-
COLOURS	WHITE

RB2000 HOARDING

PRODUCT CODE	RBHP
DIMENSIONS (MM)	L1500 H1120 D40
MATERIAL	STEEL POWDER COAT
PANEL WEIGHT	21
COUPLING	-
COLOURS	WHITE
NO PER PALLET	25 OVERSIZED
MIRA WIND SPEED	50MPH

NOTE:
System dimensions are approximated and taken up to the main panel height



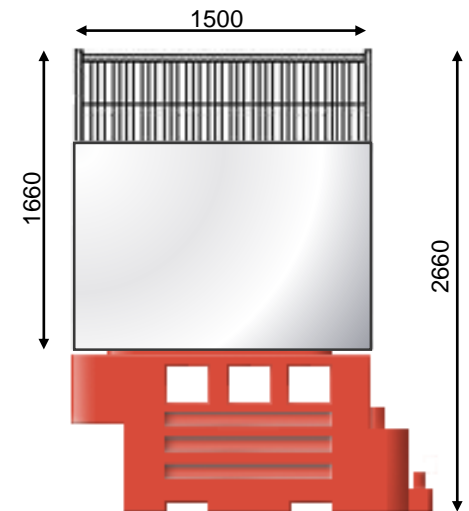
ACCESSORIES

RB2000 MESH EXTENSION

PRODUCT CODE	RB2000MEP
DIMENSIONS (MM)	L1500 H1660 D40
MATERIAL	STEEL POWDER COAT
PANEL WEIGHT	25
COUPLING	NOT SHOWN
COLOURS	WHITE
NO PER PALLET	25 OVER SIZED

NOTE:

System dimensions are approximated and taken up to the main panel height



DATA SHEET

4 / 6

RB2000 BARRIER SYSTEM

Steel gate system providing safe access to site

ACCESSORIES

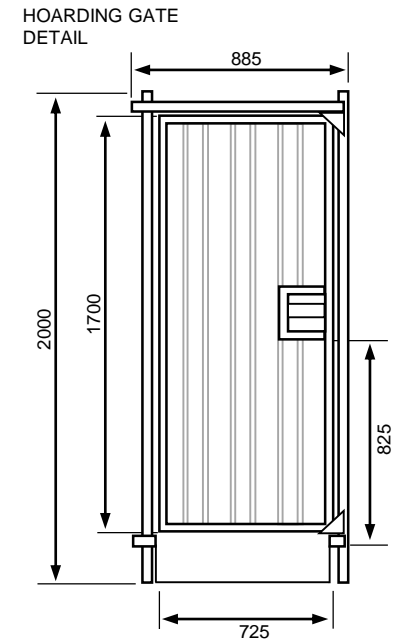
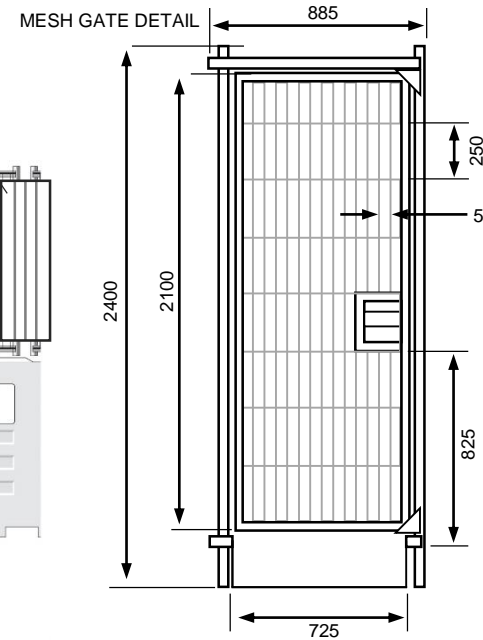
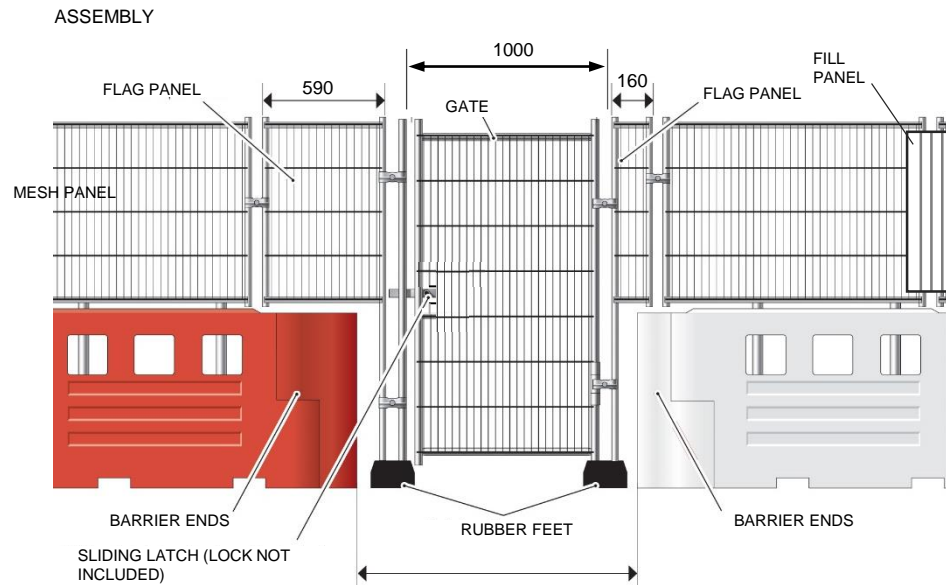
RBB 2000 MESH GATE

RB 2000 SOLID GATE

PRODUCT CODE	1MPGFM	1MPGFH
GATES (M)	W=1 X H=2.4 / CUSTOM	W=1 X H=2.4 / CUSTOM
FLAG PANELS	1 X 590MM / 1 X 160MM	1 X 590MM / 1 X 160MM
RUBBER FEET	2 X 18 KG	2 X 18 KG
BARRIER ENDS	1 X RB2000 END 1 1 X RB2000 END 2	1 X RB2000 END 1 1 X RB2000 END 2
TOTAL WEIGHT		
FILL PANELS	OPTIONAL EXTRA	

NOTE:

System dimensions are approximated and taken up to the main panel height



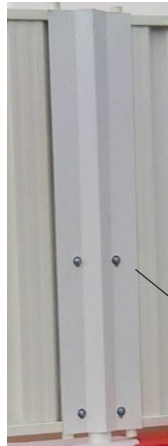
DATA SHEET 5 / 6

RB2000 BARRIER SYSTEM

Steel gate system providing safe access to site

ACCESSORIES

	RBB 2000 VEH GATE	RB 2000 SOLID VEH GATE
PRODUCT CODE	5M= 5MVGFM 7M= 7MVGFM	4M= VG4M
GATES (M)	W = 2 / 3 / 4 x H = XX	W = 2 / 3 / 4 x H = XX
FLAG PANELS	1 X 590MM / 1 X 160MM	1 X 590MM / 1 X 160MM
RUBBER FEET	2 X 18 KG	2 X 18 KG
BARRIER ENDS	1 X RB2000 END 1 1 X RB2000 END 2	1 X RB2000 END 1 1 X RB2000 END 2
TOTAL WEIGHT		
FILL PANELS	OPTIONAL EXTRA	

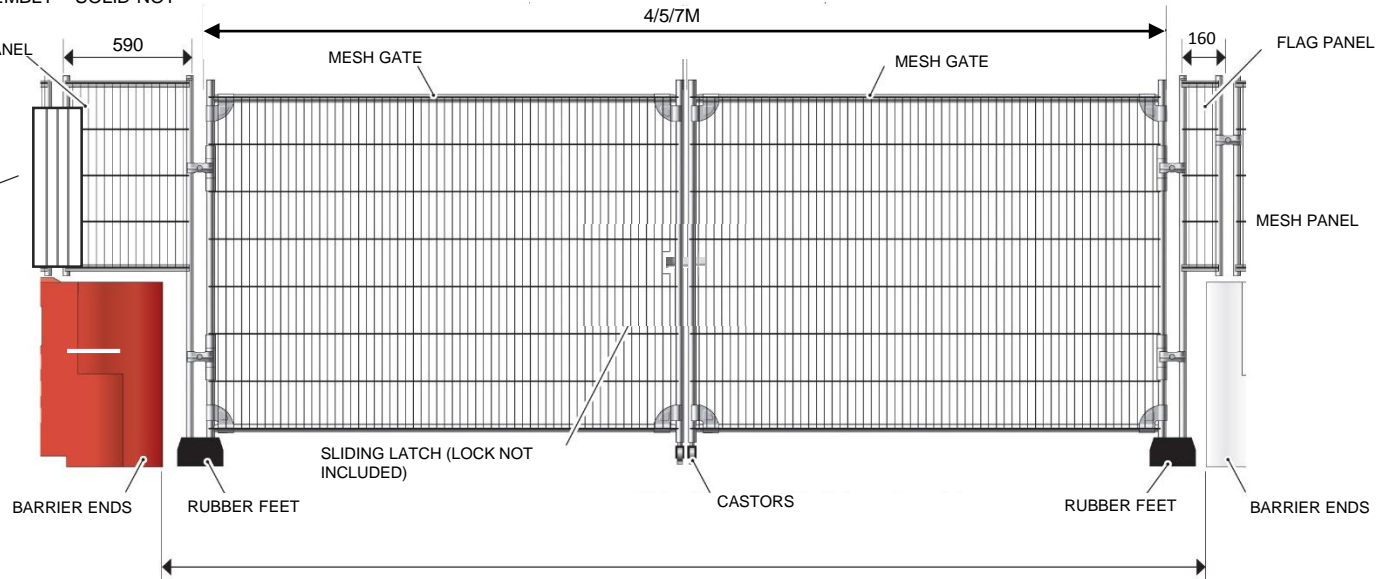


MESH GATE ASSEMBLY – SOLID NOT SHOWN

FLAG PANEL

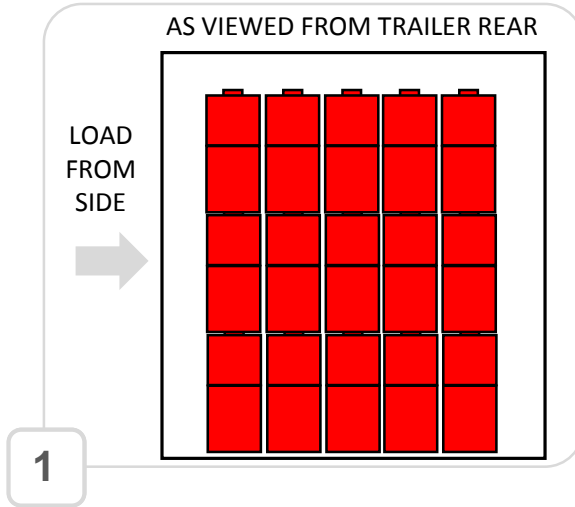
590

FILL PANEL bolts on to front of post using supplied bolts

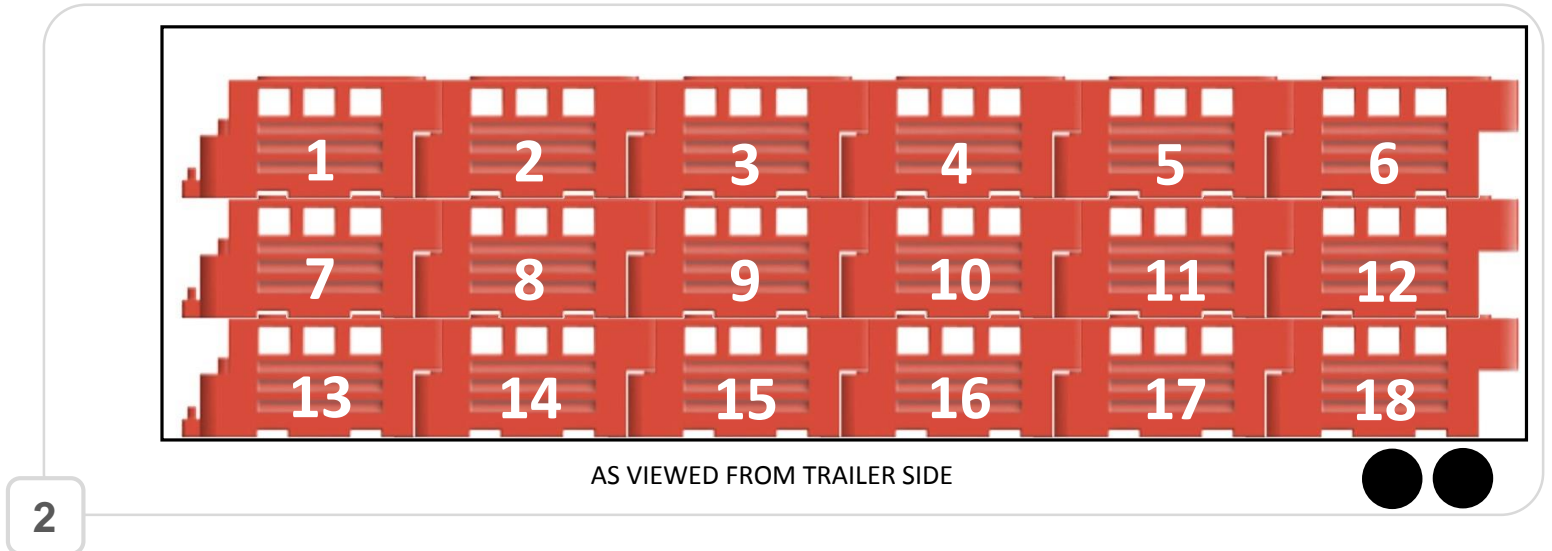


NOTE:

System dimensions are approximated and taken up to the main panel height



**WARNING - BARRIERS ARE INTERLOCKED
UNSTACK IN THE ORDER SHOWN**



NOTE:
System dimensions
are approximated
and taken up to the
main panel height

WARNING: FAILURE TO FOLLOW THESE GUIDLINES COULD RESULT IN INJURY OR DEATH

Oaklands Group always recommends that a site survey and a full risk assessment must be carried out before using the equipment.

It is the responsibility of the end user to make sure the system is suitable for their intended use. The system must be installed by an experienced and competent person and inspected regularly.

1. Tipping and sliding values, where provided, are as guide only and It is the customers responsibility to ensure the barrier and fencing system selected is suitable for their specific location.
2. The system should be installed on a flat, level surface.
3. Water ballast must be added to the correct level as indicated in the data sheet.
4. Water ballast level must be regularly checked and maintained to the fill level.
5. Connecting steel work and fencing systems must be regularly inspected for cracks of faults and replaced if faulty.
6. Connecting steel work fasteners must be regularly inspected for tightness.
7. In unsupported areas such as gates addition ballast may be required