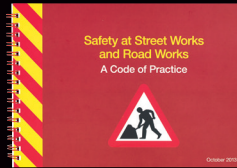


SAFETY AT STREET WORKS AND ROAD WORKS

This Code is for operatives, supervisors, managers, planners and designers who are responsible for making sure that all street and road works are safe for both operatives and the public. It will help you to safely carry out signing, lighting and guarding of street works and road works on all highways and roads (except motorways and any dual carriageways with a speed limit of 50 mph or more). Road users including pedestrians, cyclists and equestrians (horse riders) should not be put at risk, and should be able to see the extent and nature of any obstruction well before they reach it.



Safety At Street Works & Road Works – A Code of Practice

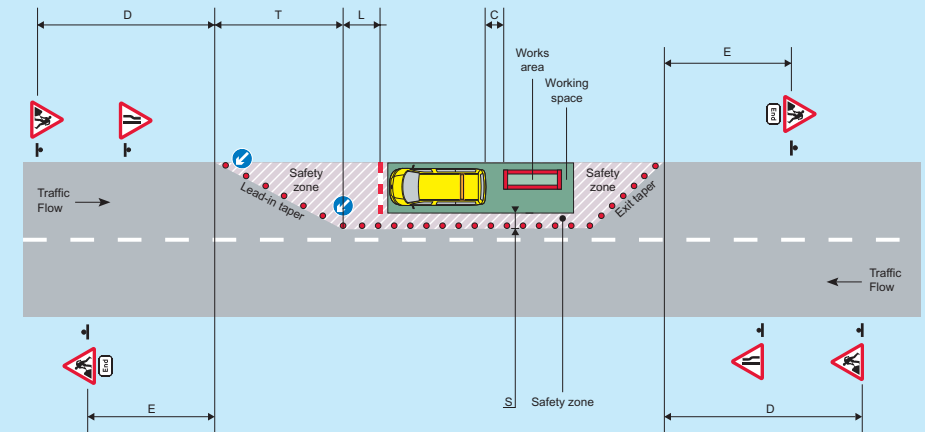
- Covers all of the UK and includes national variations
- Fully rewritten to make it easier to use
- Increased emphasis on using risk assessment
- Guidance on traffic control measures

Code: **240339**

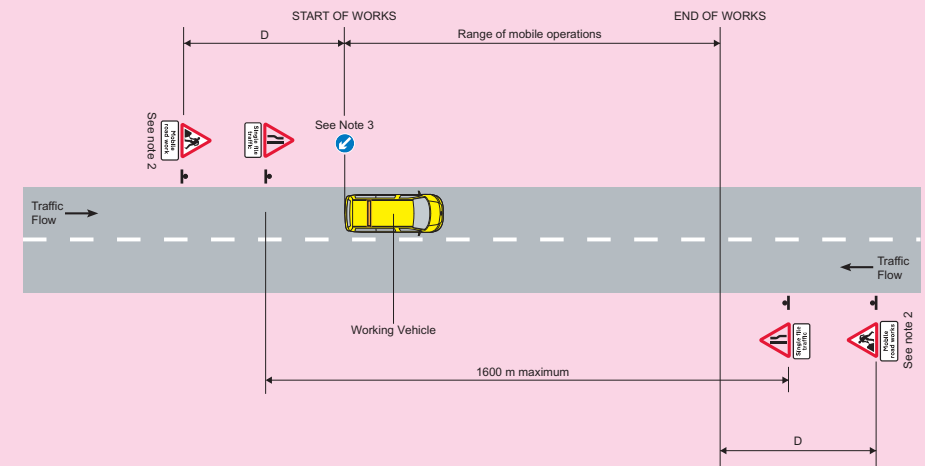
EQUIPMENT CHECKLIST - RED BOOK (SAFETY AT STREET WORKS ACT 2013)

Sign Type	Basic Layout With a works vehicle (Red Book p.21)	Mobile Works Works with a vehicle moving significantly slower than the general traffic e.g. grass/head cutting (Red Book p.84)	Short Duration Works Up to 60 mins max. (30 mins in Scotland) Basic layout applies for longer duration works (Red Book p.89)	Recommended Set of signs to cover the three work zone types
Standard triangles	2pcs 7001 1pc 517 R 1pc 517 L		2pcs 7001	
Triangles with provision for supplementary plate	2pcs 7001 ext	2pcs 7001 ext 1pc 517 R ext	1pcs 517 L ext 1pcs 517 R ext	4pcs 7001 ext 1pcs 517 L ext 1pc 517 R ext
Supplementary plates	2pcs End 645	2pcs Mobile road works 7001.12 2pcs Single file traffic 518	2pcs Single file traffic 518	2pcs End 645 2pcs Single file traffic 518 2pcs Mobile road works 7001.12
Circular signs	2pcs 610 R		2pcs 610 R 1pc 610 L	2pcs 610 R 1pc 610 L

BASIC LAYOUT WITH A WORKS VEHICLE



MOBILE WORKS ON A SINGLE CARRIAGEWAY ROAD



SHORT DURATION STOPS MORE THAN 15 MINUTES ON A SINGLE CARRIAGEWAY ROAD

